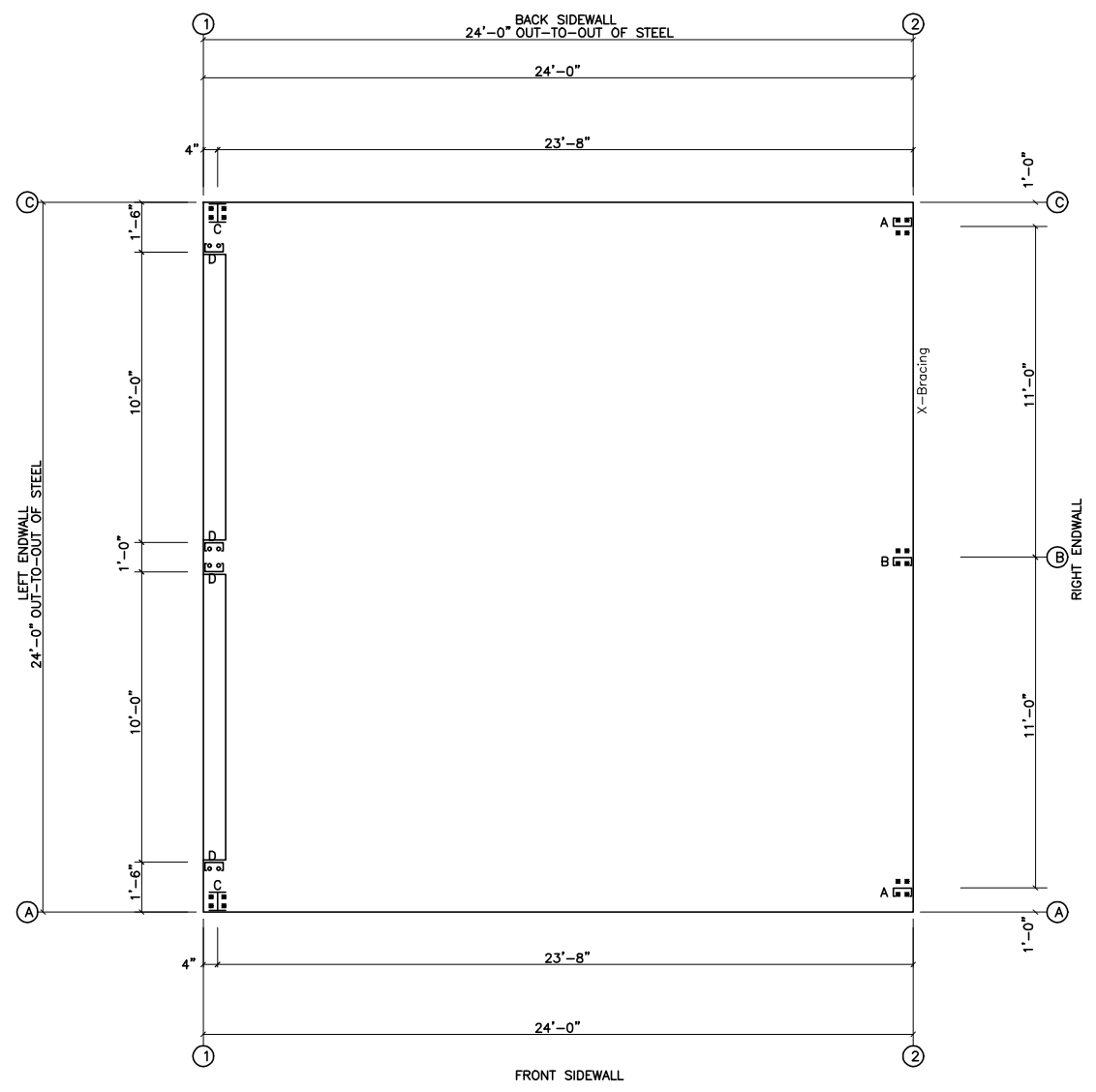


X242410-1

○ Dia= 5/8"  
 ⊗ Dia= 3/4"



FRONT SIDEWALL  
**ANCHOR BOLT PLAN**  
 NOTE: All Base Plates @ 100'-0" (U.N.)

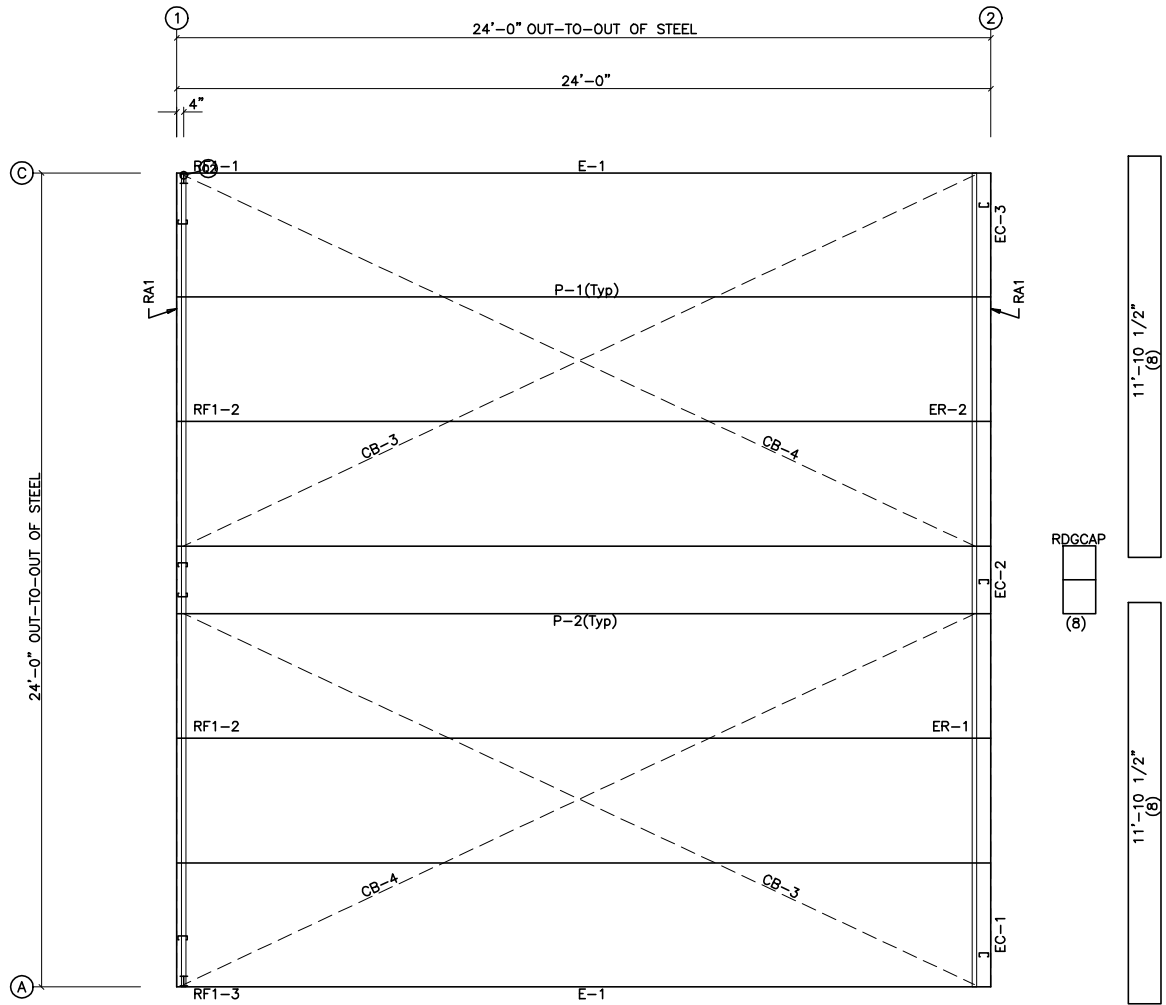
**GENERAL NOTES**

These Drawings Are Not To Scale.  
 Pinnacle's Steel Line Is Shown. A Sheeting Notch Or Brick Ledge,  
 If Used, Must Be Added To Determine The Out Of Concrete.

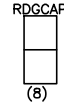
| ISSUE | DESCRIPTION | DATE    | MARK |
|-------|-------------|---------|------|
| P     | PRELIMINARY | 4/21/15 |      |
|       |             |         |      |
|       |             |         |      |



|              |                  |         |       |
|--------------|------------------|---------|-------|
| DESCRIPTION: | ANCHOR BOLT PLAN |         |       |
| CUSTOMER:    |                  |         |       |
| LOCATION:    |                  |         |       |
| Detailer     | MBS              | Checker | JC    |
| Job No.      | X242410          | Sheet   | Issue |
|              |                  |         | P     |



ROOF FRAMING PLAN



ROOF SHEETING  
 PANELS: 26 Ga. 6PBR Galvalume

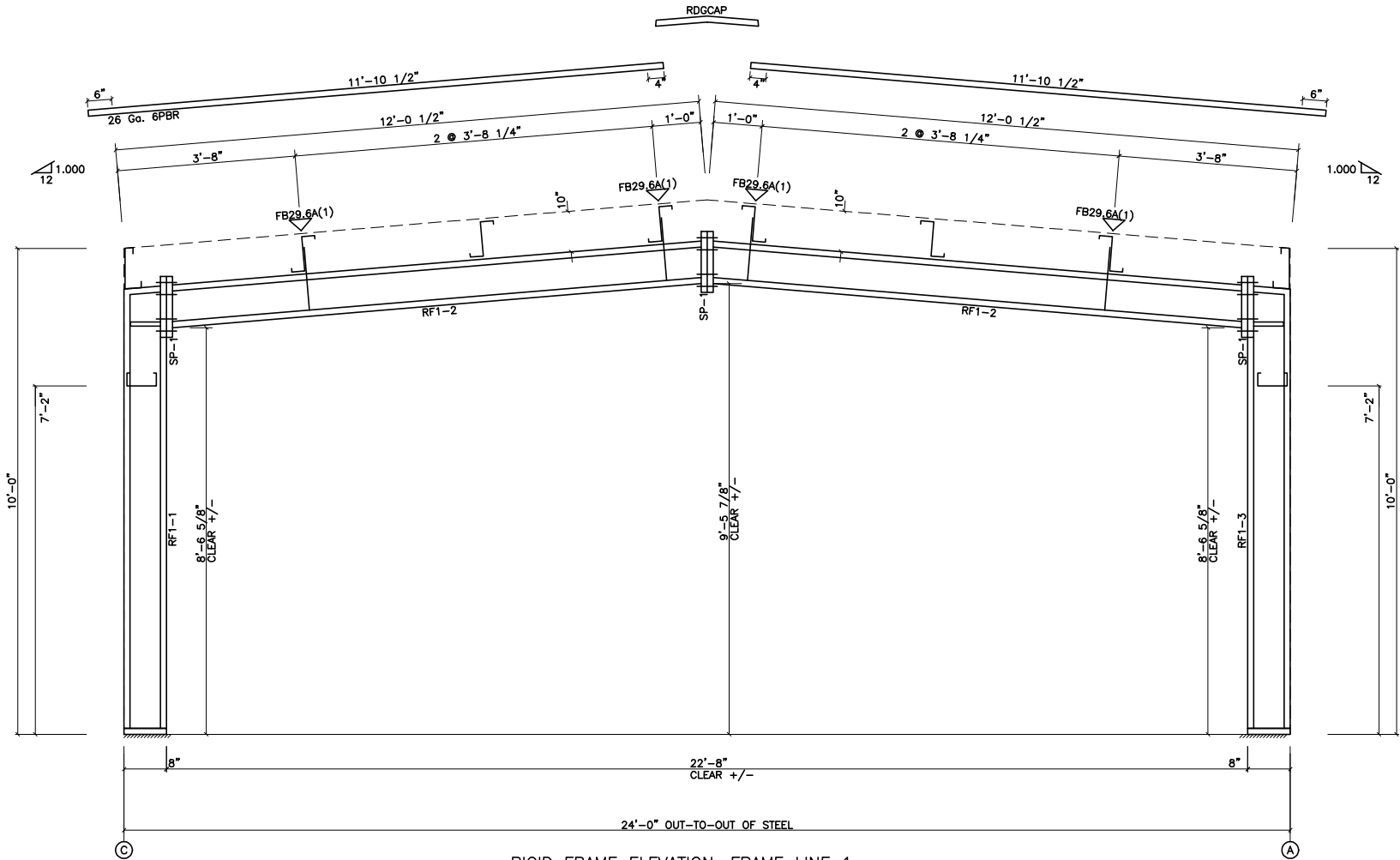
| ISSUE | DESCRIPTION | DATE    | MARK |
|-------|-------------|---------|------|
| P     | PRELIMINARY | 4/21/15 |      |
|       |             |         |      |
|       |             |         |      |



|              |              |         |       |
|--------------|--------------|---------|-------|
| DESCRIPTION: | ROOF FRAMING |         |       |
| CUSTOMER:    |              |         |       |
| LOCATION:    |              |         |       |
| Detailer     | MBS          | Checker | JC    |
| Job No.      | X242410      | Sheet   | Issue |
|              |              |         |       |
|              |              |         |       |

| SPLICE PLATE & BOLT TABLE |     |     |     |      |      |        |       |       |           |
|---------------------------|-----|-----|-----|------|------|--------|-------|-------|-----------|
| Mark                      | Qty |     | Int | Type | Dia  | Length | Width | Thick | Length    |
|                           | Top | Bot |     |      |      |        |       |       |           |
| SP-1                      | 4   | 4   | 0   | A325 | 3/4" | 1 3/4" | 6"    | 3/8"  | 1'-1 7/8" |

▽ FLANGE BRACES: (1) One Side; (2) Two Sides  
 FBxxA(1): xx=length(in)  
 A - L2X2X1/8



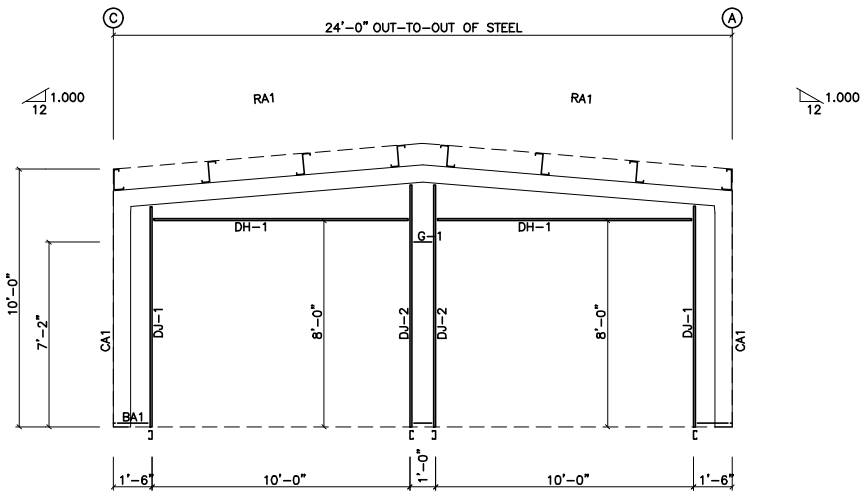
RIGID FRAME ELEVATION: FRAME LINE 1

| ISSUE | DESCRIPTION | DATE    | MARK |
|-------|-------------|---------|------|
| P     | PRELIMINARY | 4/21/15 |      |
|       |             |         |      |
|       |             |         |      |

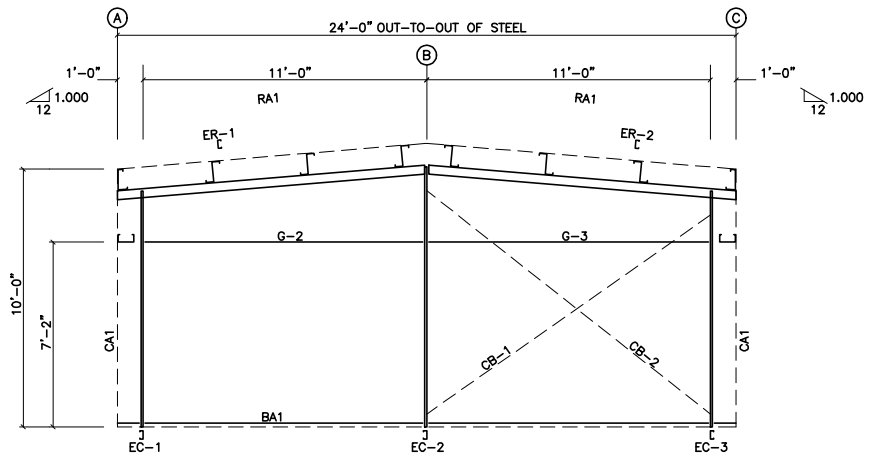


|              |                       |         |       |
|--------------|-----------------------|---------|-------|
| DESCRIPTION: | RIGID FRAME ELEVATION |         |       |
| CUSTOMER:    |                       |         |       |
| LOCATION:    |                       |         |       |
| Detailer     | MBS                   | Checker | JC    |
| Job No.      | X242410               | Sheet   | Issue |
|              |                       |         | P     |

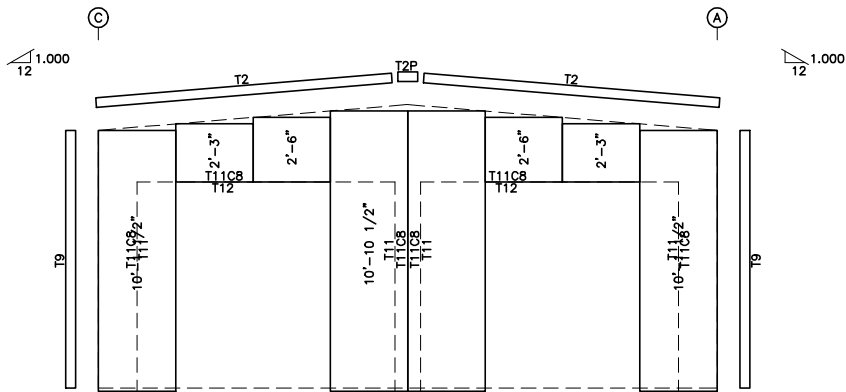
| BOLT TABLE       |      |      |      |        |
|------------------|------|------|------|--------|
| FRAME LINE 1 & 2 |      |      |      |        |
| LOCATION         | QUAN | TYPE | DIA  | LENGTH |
| ER-1/ER-2        | 4    | A325 | 5/8" | 1 1/2" |
| Columns/Raf      | 2    | A325 | 5/8" | 1 1/2" |
| Jamb             | 2    | A325 | 5/8" | 1 1/2" |



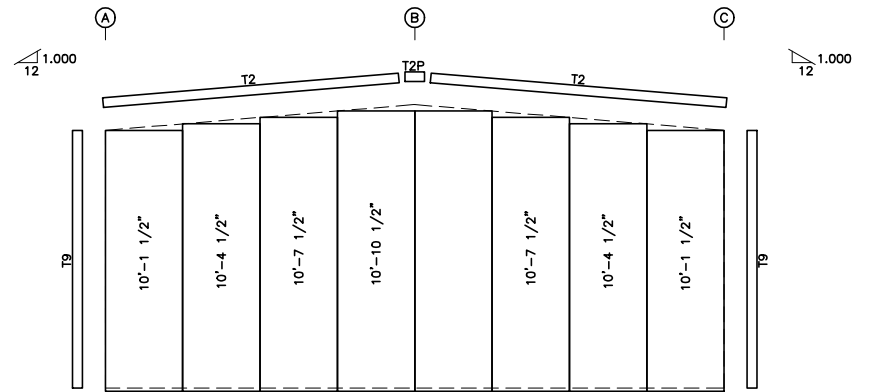
ENDWALL FRAMING: FRAME LINE 1



ENDWALL FRAMING: FRAME LINE 2



ENDWALL SHEETING & TRIM: FRAME LINE 1  
PANELS: 26 Ga. 6PBR - Sil Poly



ENDWALL SHEETING & TRIM: FRAME LINE 2  
PANELS: 26 Ga. 6PBR - Sil Poly

GENERAL NOTES:

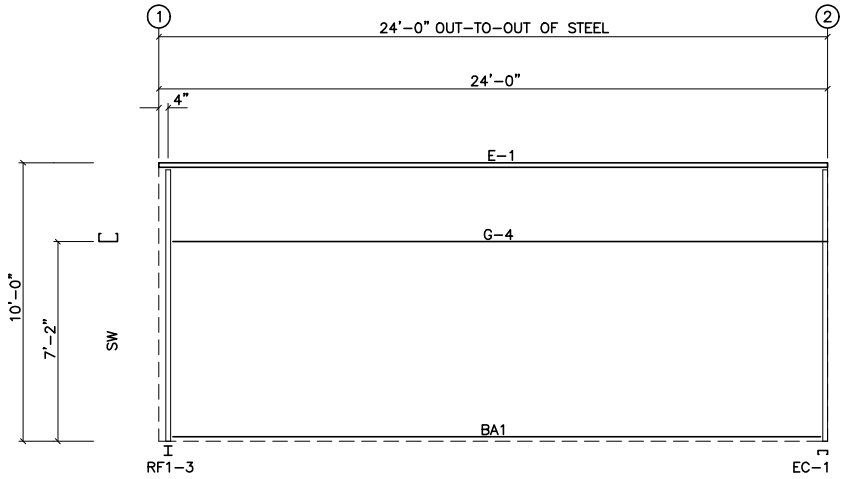
1. Pinnacle standard trim lap is 3 inches max.
2. Pinnacle pre-cuts wall panels at factory located openings as required.
3. Slot girts in field for cable passage at flush walls as required.

| ISSUE | DESCRIPTION | DATE    | MARK |
|-------|-------------|---------|------|
| P     | PRELIMINARY | 4/21/15 |      |
|       |             |         |      |
|       |             |         |      |

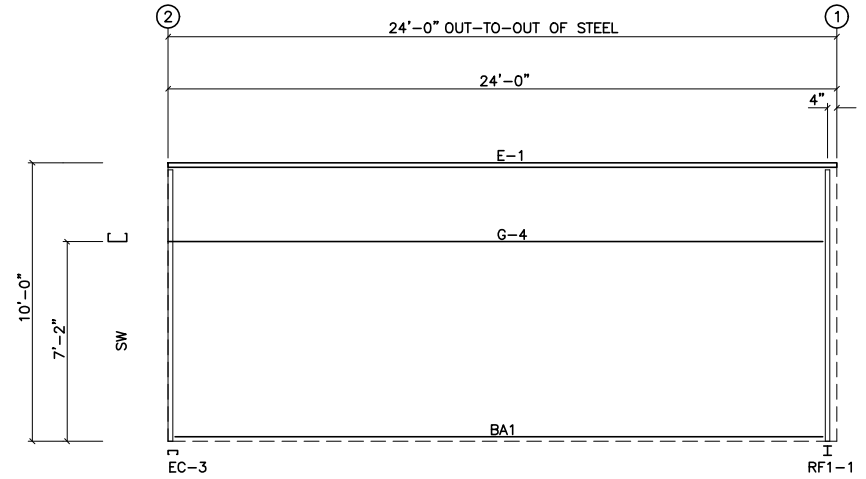


PO BOX 1268 - CABOT, AR 72023 (501) 941-3929

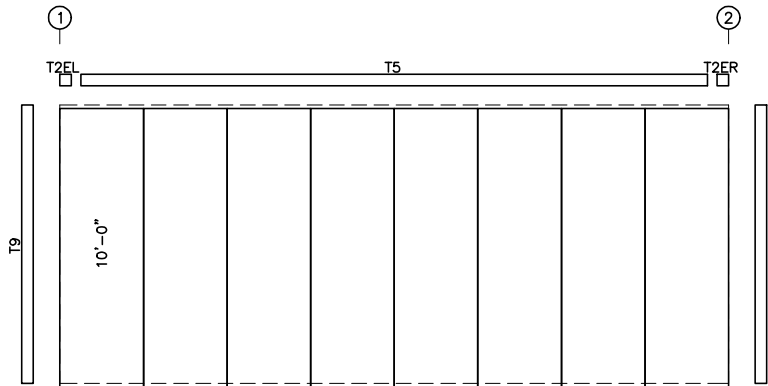
| DESCRIPTION: ENDWALL FRAMING |             |           |
|------------------------------|-------------|-----------|
| CUSTOMER:                    |             |           |
| LOCATION:                    |             |           |
| Detailer: MBS                | Checker: JC | Designer: |
| Job No. X242410              | Sheet:      | Issue P   |



SIDEWALL FRAMING: FRAME LINE A

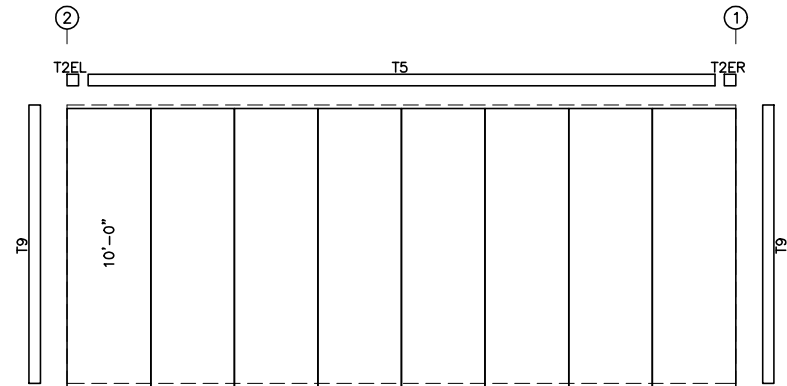


SIDEWALL FRAMING: FRAME LINE C



SIDEWALL SHEETING & TRIM: FRAME LINE A

PANELS: 26 Ga. 6PBR - Sil Poly



SIDEWALL SHEETING & TRIM: FRAME LINE C

PANELS: 26 Ga. 6PBR - Sil Poly

GENERAL NOTES:

1. Pinnacle standard trim lap is 3 inches max.
2. Pinnacle pre-cuts wall panels at factory located openings as required.
3. Slot girts in field for cable passage at flush walls as required.

| ISSUE | DESCRIPTION | DATE    | MARK |
|-------|-------------|---------|------|
| P     | PRELIMINARY | 4/21/15 |      |
|       |             |         |      |
|       |             |         |      |



PO BOX 1268 - CABOT, AR 72023 (501) 941-3929

|              |                  |         |       |
|--------------|------------------|---------|-------|
| DESCRIPTION: | SIDEWALL FRAMING |         |       |
| CUSTOMER:    |                  |         |       |
| LOCATION:    |                  |         |       |
| Detailer     | MBS              | Checker | JC    |
| Job No.      | X242410-         | Sheet   | Issue |
|              |                  |         | P     |