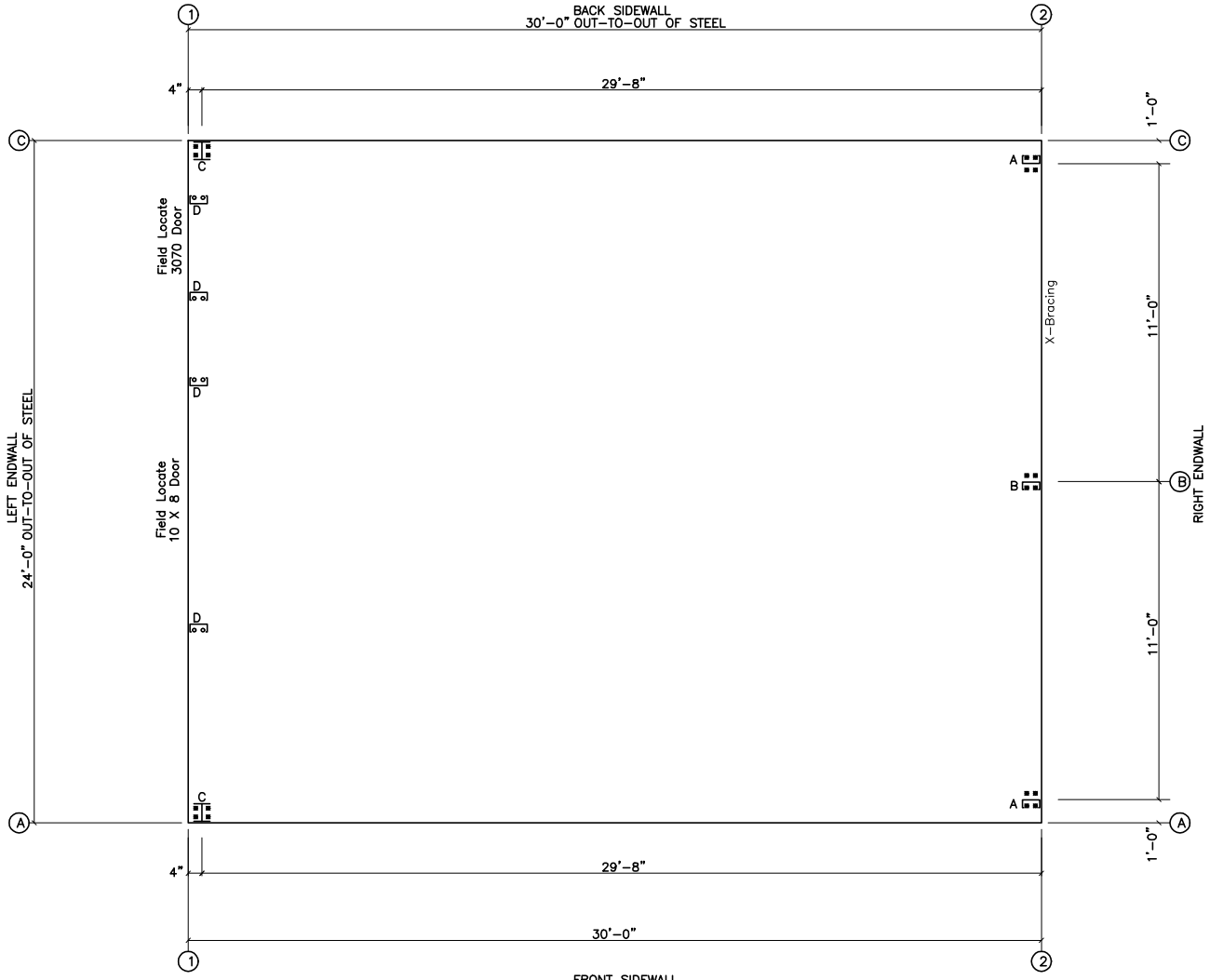


**X243010-3**

○ Dia= 5/8"  
 ⊗ Dia= 3/4"



ANCHOR BOLT PLAN  
 NOTE: All Base Plates @ 100'-0" (U.N.)

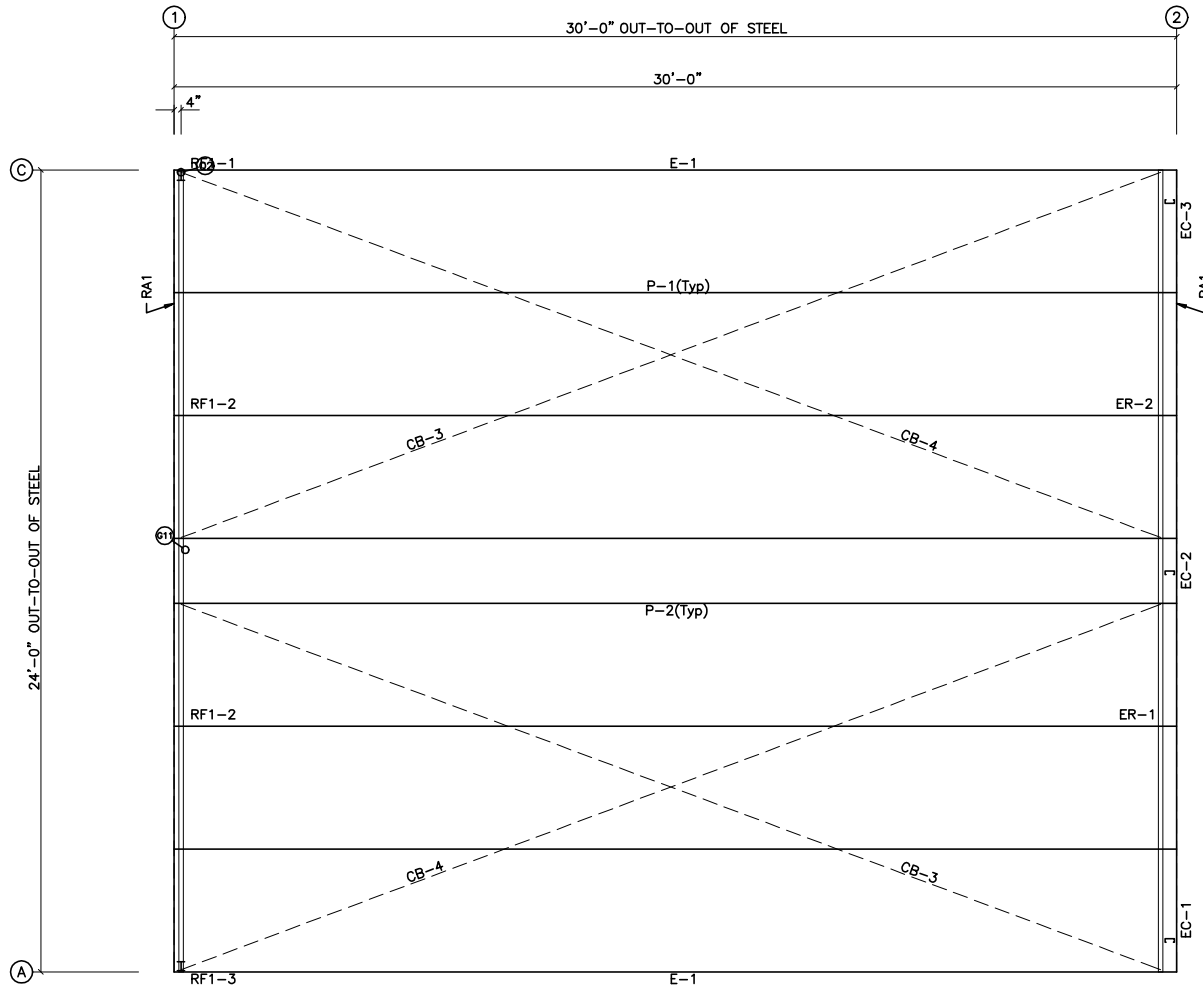
GENERAL NOTES

These Drawings Are Not To Scale.  
 Pinnacle's Steel Line Is Shown. A Sheeting Notch Or Brick Ledge,  
 If Used, Must Be Added To Determine The Out Of Concrete.

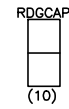
ISSUE	DESCRIPTION	DATE	MARK
P	PRELIMINARY	3/ 5/15	



DESCRIPTION:	ANCHOR BOLT PLAN		
CUSTOMER:			
LOCATION:			
Detailer	Checker	Designer	
Job No. X243010-	Sheet	Issue	P



ROOF FRAMING PLAN



12'-2 1/2"  
(10)

12'-2 1/2"  
(10)

ROOF SHEETING

PANELS: 26 Ga. 6PBR Galvalume

ISSUE	DESCRIPTION	DATE	MARK
P	PRELIMINARY	3/ 5/15	

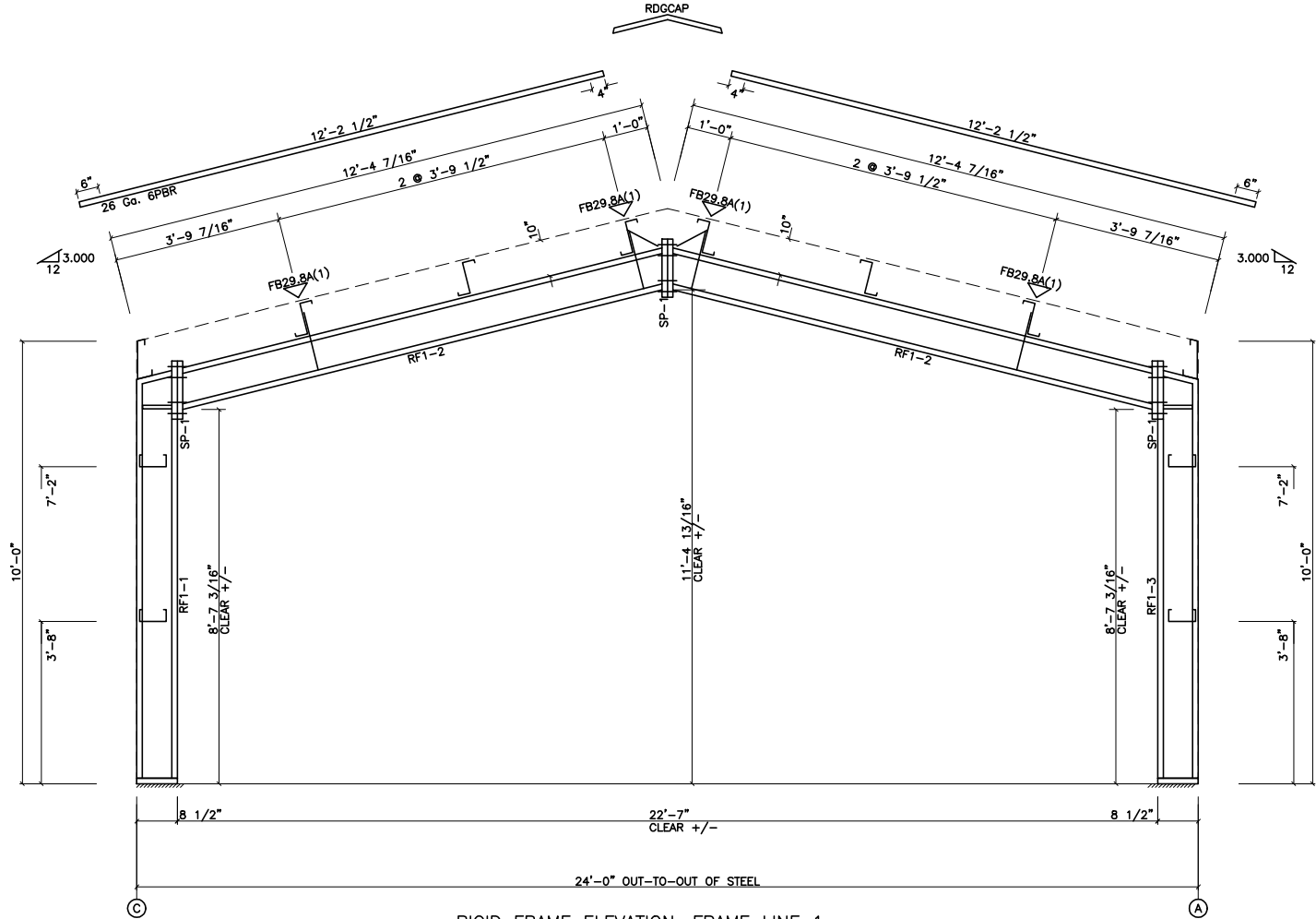


PO BOX 1268 - CABOT, AR 72023 (501) 941-3929

DESCRIPTION:	ROOF FRAMING	
CUSTOMER:		
LOCATION:		
Detailer	Checker	Designer
Job No. X243010-	Sheet	Issue P

SPLICE PLATE & BOLT TABLE									
Mark	Qty		Int	Type	Dia	Length	Width	Thick	Length
	Top	Bot							
SP-1	4	4	0	A325	3/4"	1 3/4"	6"	3/8"	1'-3 1/2"

▽ FLANGE BRACES: (1) One Side; (2) Two Sides  
 FBxxA(1): xx=length(in)  
 A - L2X2X1/8



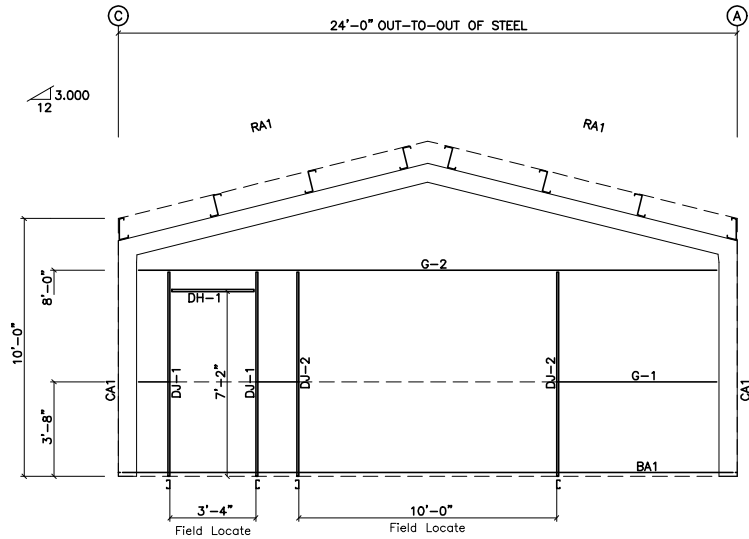
RIGID FRAME ELEVATION: FRAME LINE 1

ISSUE	DESCRIPTION	DATE	MARK
P	PRELIMINARY	3/ 5/15	

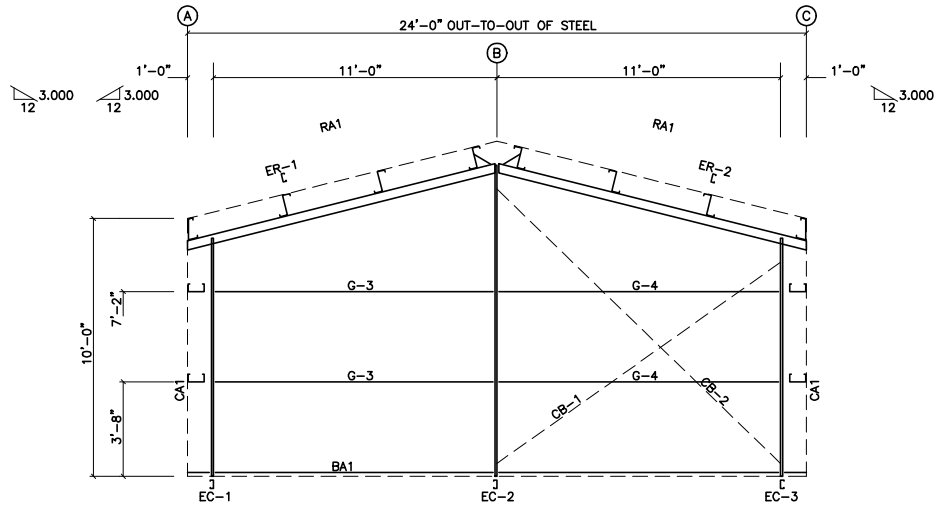


DESCRIPTION:	RIGID FRAME ELEVATION		
CUSTOMER:			
LOCATION:			
Detailer:	Checker:	Designer:	
Job No. X243010-	Sheet	Issue	P

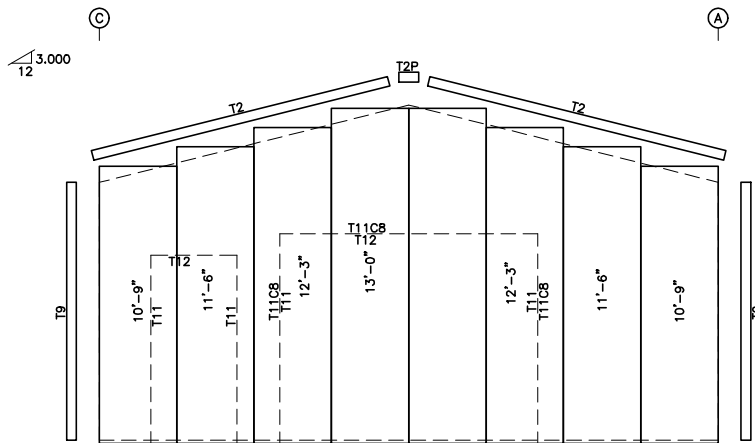
BOLT TABLE				
FRAME LINE 1 & 2				
LOCATION	QUAN	TYPE	DIA	LENGTH
ER-1/ER-2	4	A325	5/8"	1 3/4"
Columns/Ref	2	A325	5/8"	1 1/2"



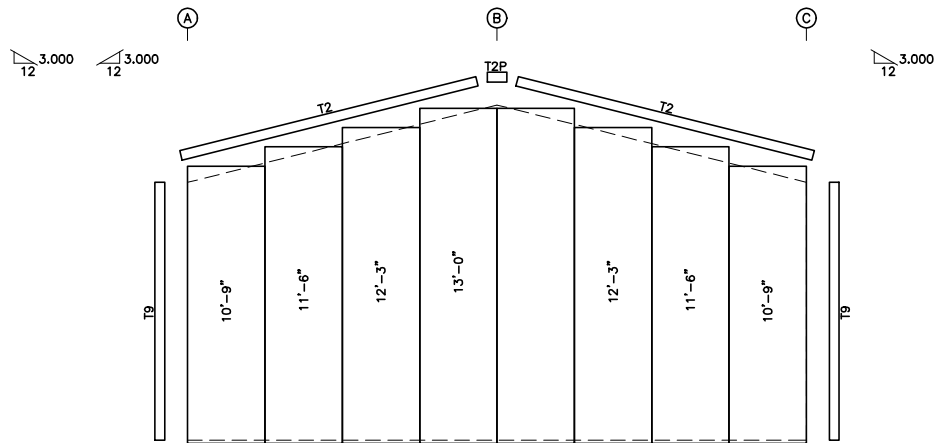
ENDWALL FRAMING: FRAME LINE 1



ENDWALL FRAMING: FRAME LINE 2



ENDWALL SHEETING & TRIM: FRAME LINE 1  
PANELS: 26 Ga. 6PBR - Sil Poly



ENDWALL SHEETING & TRIM: FRAME LINE 2  
PANELS: 26 Ga. 6PBR - Sil Poly

**GENERAL NOTES:**

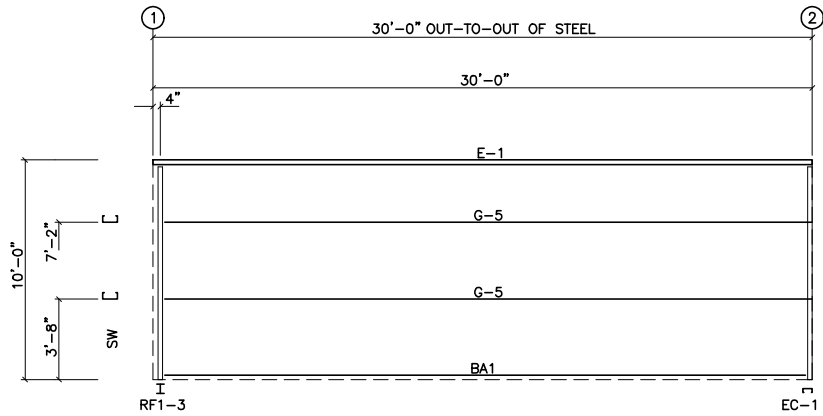
1. Pinnacle standard trim lap is 3 inches max.
2. Pinnacle pre-cuts wall panels at factory located openings as required.
3. Slot girts in field for cable passage at flush walls as required.

ISSUE	DESCRIPTION	DATE	MARK
P	PRELIMINARY	3/ 5/15	

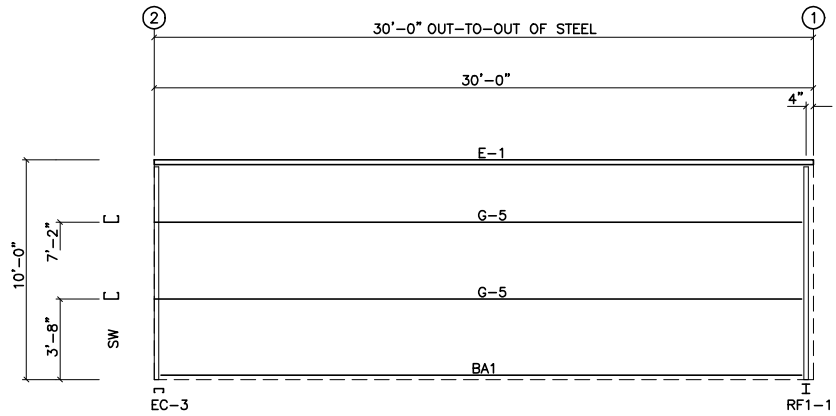


PO BOX 1268 - CABOT, AR 72023 (501) 941-3929

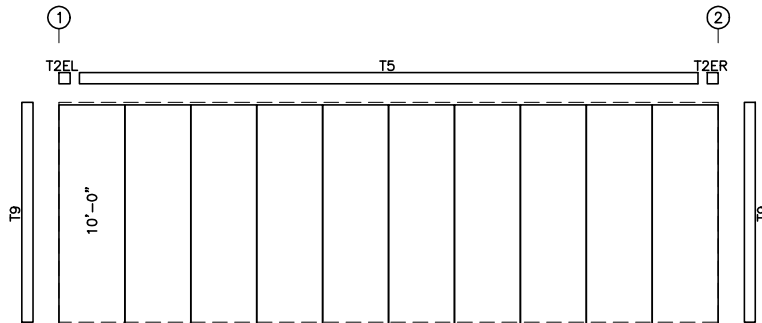
DESCRIPTION:	ENDWALL FRAMING		
CUSTOMER:			
LOCATION:			
Detailer	Checker	Designer	
Job No. X243010	Sheet	Issue	P



SIDEWALL FRAMING: FRAME LINE A

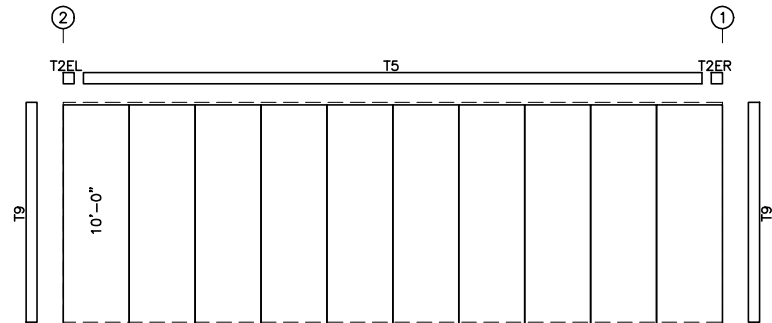


SIDEWALL FRAMING: FRAME LINE C



SIDEWALL SHEETING & TRIM: FRAME LINE A

PANELS: 26 Ga. 6PBR - Sil Poly



SIDEWALL SHEETING & TRIM: FRAME LINE C

PANELS: 26 Ga. 6PBR - Sil Poly

GENERAL NOTES:

1. Pinnacle standard trim lap is 3 inches max.
2. Pinnacle pre-cuts wall panels at factory located openings as required.
3. Slot girts in field for cable passage at flush walls as required.

ISSUE	DESCRIPTION	DATE	MARK
P	PRELIMINARY	3/ 5/15	



PO BOX 1268 - CABOT, AR 72023 (501) 941-3929

DESCRIPTION:	SIDEWALL FRAMING		
CUSTOMER:			
LOCATION:			
Detailer	Checker	Designer	
Job No. X243010-	Sheet	Issue	P